

Batch Configuration Software

User Manual

UD.6L0202D1271A01

Thank you for purchasing our product. This manual applies to Batch Configuration software, please read it carefully for the better use of this software. The contents in this manual are subject to change without notice.

Contents

Chapter 1 Introduction.....	3
1.1 Overview	3
1.2 System Requirements.....	3
1.3 Conventions.....	3
1.4 Version Information	3
Chapter 2 Interface Introduction	4
Chapter 3 Adding Devices	6
3.1 Adding Online Device	6
3.2 Adding by IP Address, IP Segment or Port No.	6
Chapter 4 Device Configuration	9
4.1 Remote Configuration	9
4.2 Exporting Configuration File	9
4.3 Batch Configuration.....	10
4.4 Other Configuration	12
4.4.1 Changing Password	12
4.4.2 Restoring the Default Settings.....	12
4.4.3 Rebooting the Device	13

Chapter 1 Introduction

1.1 Overview

The Batch Configuration software can be used to configure the parameters of one or many devices, such as network, user, and exception parameters. You can add devices for configuring by searching online devices or by IP address. And the software also provides other functions, like editing password, restoring default settings and rebooting the device.

1.2 System Requirements

Operating System: Microsoft Windows 7 / Windows 2008 32 / 64-bit
Windows XP / Windows 2003 32-bit

CPU: Intel Pentium IV @ 3.0 GHz or above

RAM: 1G or above

Video Card: RADEON X700 Series


Display: 1024*768 resolution or above

1.3 Conventions

In order to simplify the description, we define the “Batch Configuration software” as “software” in the following chapters.

1.4 Version Information

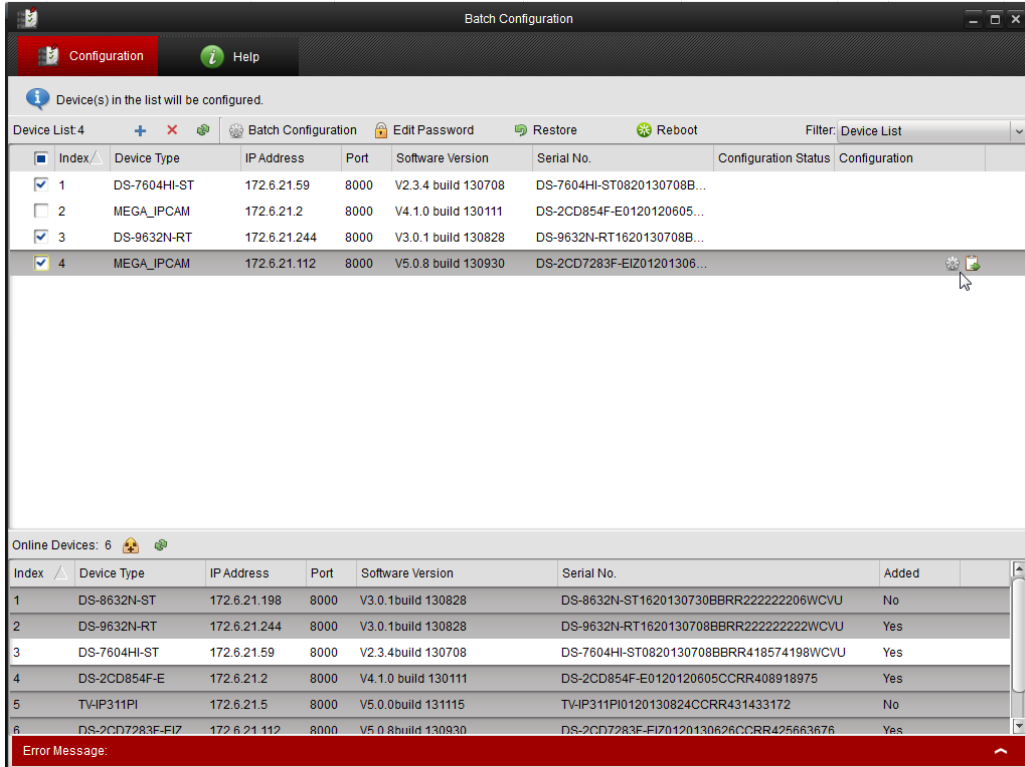


After installing the software, run the software and click  on the control panel to enter the Batch Configuration interface.

Click the **Help > About** tab at the top to view the version information or click **Help > User Manual** to get the User Manual of the software.




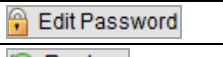
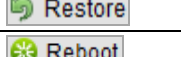
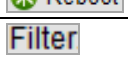




Chapter 2 Interface Introduction

In this chapter, the main icons, buttons and lists of the software will be introduced.





Device List: This area displays the added device(s). For adding devices, please refer to Chapter 3.


The following table introduces the icons, buttons and drop-down list in the device list area.

	Add the devices.
	Delete the devices.
	Refresh the device list.
	Batch configuration of parameters for the devices.
	Batch editing of password for the devices.
	Batch restoring of default settings for the devices.
	Batch rebooting of devices.
	Filter the device type. The default filter types include Device List (show all the added devices), Device Failed to be Configured (show the devices with failed configuration) and Device is Configured (show the successfully configured devices). The added device type will also be added to the filter type.
	Remote configuration of the device.
	Export the parameters of the device.

Online Devices: This area shows the active online devices within the same subnet with the software.

The following table introduces the icons in the online devices area.

	Add the online devices to the device list.
	Refresh the online devices.

Error Message: Click  to expand the error message panel. The information of operation failure will be listed.

Chapter 3 Adding Devices


The software provides 4 ways for adding the devices. You can add the active online devices within your subnet, add devices by IP address, add devices by IP segment or add devices by device port No. range.

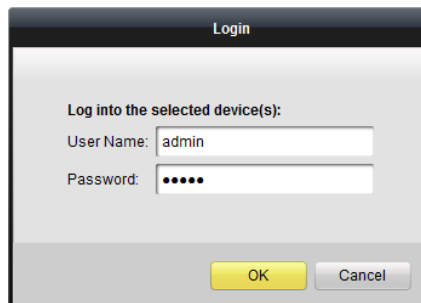
3.1 Adding Online Device

Steps:

1. On the Batch Configuration interface, the active online devices within your subnet display in the **Online Devices** list in the lower part of the interface.

Online Devices: 7							
Index	Device Type	IP Address	Port	Software Version	Serial No.	Added	
1	DS-8632N-ST	172.6.21.198	8000	V3.0.1build 130828	DS-8632N-ST1620130730BBRR222222206WCVU	No	
2	DS-9632N-RT	172.6.21.244	8000	V3.0.1build 130828	DS-9632N-RT1620130708BBRR22222222WCVU	No	
3	IDS-2DF5284-A/T	172.6.21.175	8000	V5.1.0build 131025	IDS-2DF5284-A/T20131017CCCH433236620B	No	
4	DS-7604HI-ST	172.6.21.59	8000	V2.3.4build 130708	DS-7604HI-ST0820130708BBRR418574198WCVU	No	
5	DS-2CD854F-E	172.6.21.2	8000	V4.1.0 build 130111	DS-2CD854F-E0120120605CCRR408918975	No	
6	DS-7208HV-SH	172.6.21.192	8000	V2.1.1build 120706	DS-7208HV-SH08AARRVUJ	No	

2. You can click to select a device or hold the Ctrl or Shift key to select multiple devices, and then click  to pop up the Login dialog box.



The Login dialog box has a title bar 'Login'. Below it, the text 'Log into the selected device(s):' is followed by two input fields: 'User Name:' with the value 'admin' and 'Password:' with masked characters '.....'. At the bottom, there are two buttons: 'OK' and 'Cancel'.

3. Enter the user name and password, and click **OK** to save the settings.
Note: Only the devices that are successfully logged in will be added to the device list for configuration.

3.2 Adding by IP Address, IP Segment or Port No.

Click  and the adding devices dialog box pops up.

Task 1: Add by IP Address

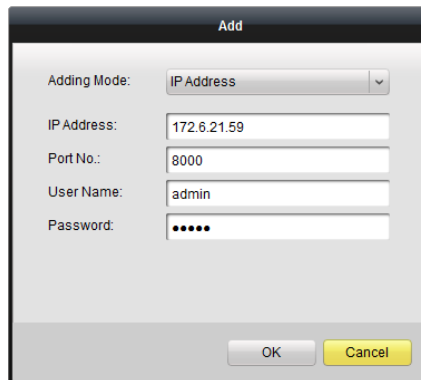
Purpose:

You can add the device through IP address.

Steps:

1. Select IP Address in the **Adding Mode** drop-down list, enter the IP address in the

IP Address field, and set the port No., user name and password of the device.

A screenshot of a software dialog box titled "Add". It contains a dropdown menu labeled "Adding Mode:" with "IP Address" selected. Below this are four text input fields: "IP Address:" containing "172.6.21.59", "Port No.:" containing "8000", "User Name:" containing "admin", and "Password:" containing six dots. At the bottom right are two buttons: "OK" and "Cancel".

2. Click **OK** to add the device to the device list.

Task 2: Add by IP Segment

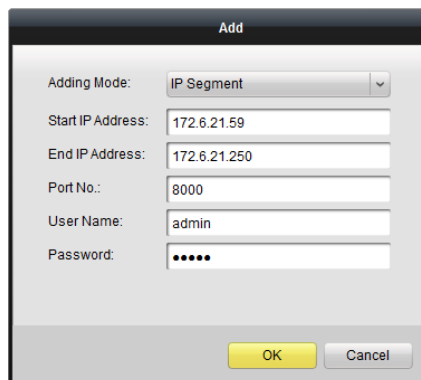
Purpose:

You can simultaneously add many the devices whose IP addresses are among the IP segment.

Steps:

1. Select IP Segment in the **Adding Mode** drop-down list, enter the **Start IP Address** and **End IP Address**, and set the port No., user name and password.

Note: You cannot add the device(s) to the device list if the user name, password or port No. is incorrect.

A screenshot of a software dialog box titled "Add". It contains a dropdown menu labeled "Adding Mode:" with "IP Segment" selected. Below this are five text input fields: "Start IP Address:" containing "172.6.21.59", "End IP Address:" containing "172.6.21.250", "Port No.:" containing "8000", "User Name:" containing "admin", and "Password:" containing six dots. At the bottom right are two buttons: "OK" and "Cancel".

2. Click **OK** to search and add the devices whose IP addresses are within the range of the defined IP segment to the device list.

Task 3: Add by Port No.

Purpose:

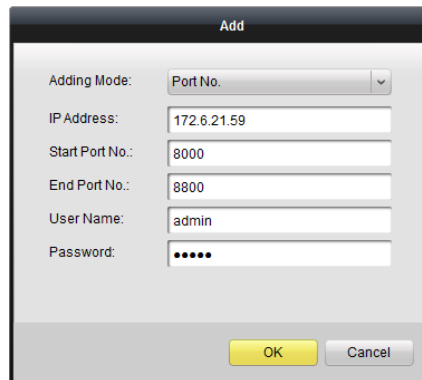
When you want to add multiple devices which access to the network via port mapping, you can simultaneously add them by this method. In this way, you can add many devices with the same IP address while with different port No..

Steps:

1. Select Port No. in the **Adding Mode** drop-down list, enter the IP address, define the port No. range in the **Start Port No.** and **End Port No.** field, and set the user name and password.

Note: You cannot add the device(s) to the device list if the user name or

password is incorrect.



The screenshot shows a dialog box titled "Add". It contains the following fields and values:

- Adding Mode: Port No. (dropdown menu)
- IP Address: 172.6.21.59
- Start Port No.: 8000
- End Port No.: 8800
- User Name: admin
- Password:

At the bottom right, there are two buttons: "OK" (highlighted in yellow) and "Cancel".

2. Click **OK** to search and add the devices of which port numbers are within the defined port No. range to the device list.

Chapter 4 Device Configuration


The network, user, RS-232, exception and other parameters of the added devices can be configured in batch via the software. And other functions, like remote configuration, editing password, restoring default settings and rebooting the device can also be achieved.


4.1 Remote Configuration

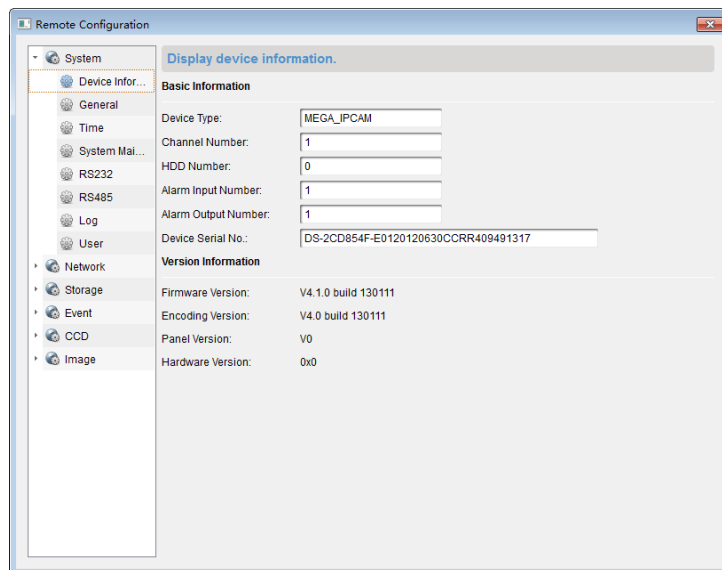
Purpose:

You can configure the parameters of the device via the software, such as system configuration, network configuration, storage configuration and event configuration.

Steps:

1. In the device list area, select a device and click  in the device item to activate the remote configuration interface.

Note: If the software is not shown in full-screen mode, you may have to drag the horizontal scrollbar to display the  icon.




2. You can configure the parameters. For detailed parameter configuration, please refer to the user manual of the device.


4.2 Exporting Configuration File

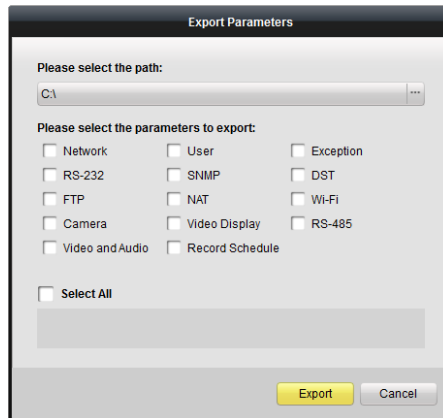
Purpose:



Exporting and saving the configuration file on your local PC so the configuration files of one device can be imported to multiple device devices if they are to be configured with the same parameters.

Steps:

1. In the device list area, select a device and click  in the device item to activate the parameters exporting interface.

Note: If the software is not shown in full-screen mode, you may have to drag the horizontal scrollbar to access the  icon.



2. Click  to select the saving path for exporting the configuration file.
3. Select the parameters to export, including network, user, exception, RS-232, etc. You can select the parameters as desired, or check  checkbox of **Select All** to select all the above parameters for exporting.
4. Click **Export** to start exporting the parameters.

Note: The parameters that are supported by the device can be exported successfully.



4.3 Batch Configuration

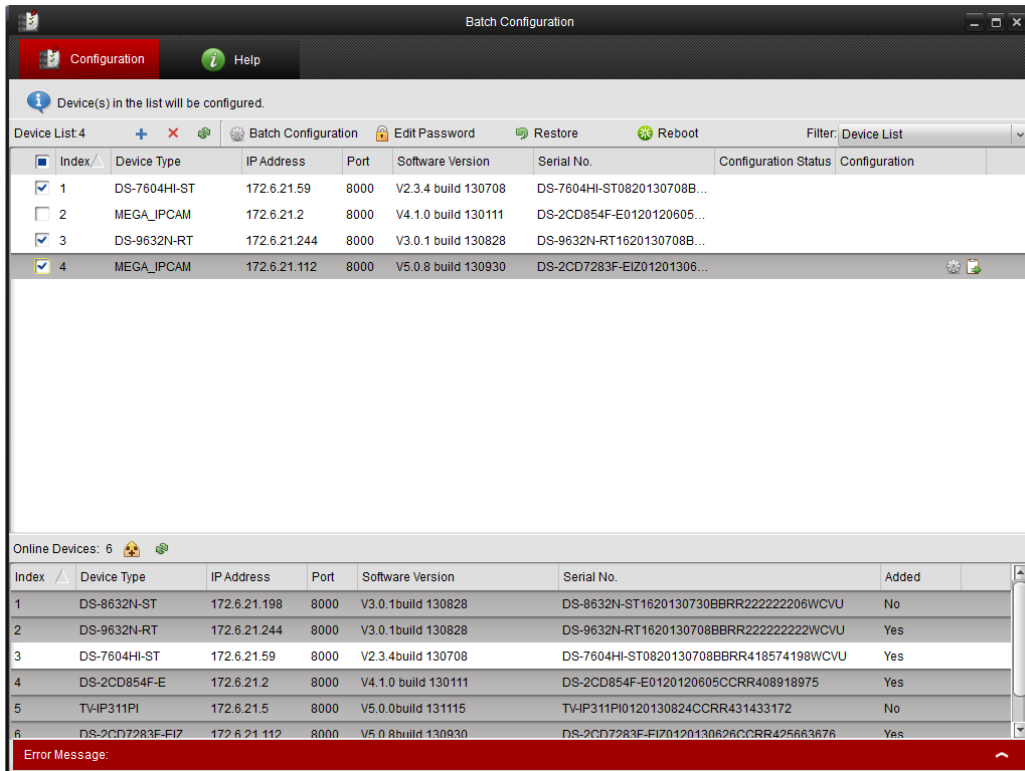
Purpose:

When multiple devices can be configured with the same parameters, you can adopt batch configuration to set the parameters for the devices simultaneously.

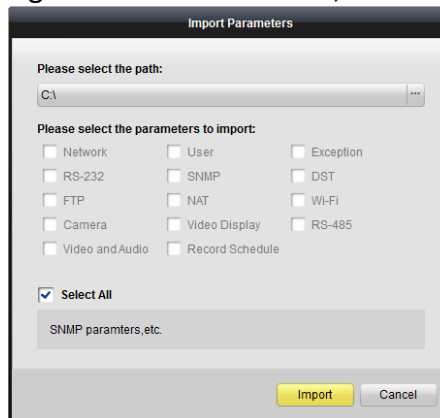
Steps:


1. In the device list area, check  checkbox to select the device(s).

Note: You can click  to delete the selected device(s), click  to get the latest status of the device(s) and the online device(s) will be kept. Only the online device can be configured.



- Click **Batch Configuration** and the parameter importing interface pops up.
Note: If the configuration file, device type or software version of the devices selected for batch configuration is not identical, the batch configuration may fail.



- Click  to select the path where the configuration file stored and the available parameter types can be selectable.
- Select the parameters as desired, or check ☒ checkbox of **Select All** to select all the available parameters for importing.

Notes:

Network: The IP address, subnet mask and MAC address of the device will not be configured.

User: The IP address and MAC address of the user will not be configured.

Video Display: The camera name, position parameters (such as motion detection area position) and camera linkage will not be configured.

- Click **Import** to start importing the parameters.

Note: If the configuration files do not match that of the devices, such as software

version mismatch, the configuration file may fail to be imported.



4.4 Other Configuration

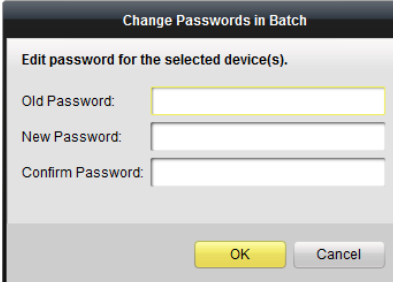
Purpose:

The software also provides batch configuration for other functions, like editing password, restoring default settings and rebooting the device.

4.4.1 Changing Password

Steps:

1. In the device list area, check ☒ checkbox to select the device(s).
Note: You can click  to delete the selected device(s), click  to get the latest status of the device(s) and the online device(s) will be kept. Only the online device can be configured.
2. Click **Edit Password** and change the password for the selected device(s).



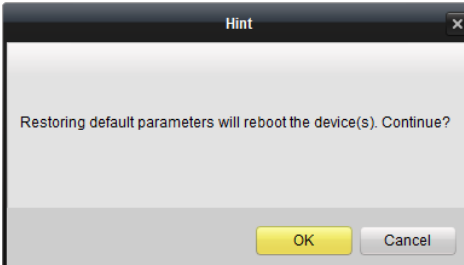
A dialog box titled "Change Passwords in Batch". It contains the text "Edit password for the selected device(s)." followed by three input fields labeled "Old Password:", "New Password:", and "Confirm Password:". At the bottom, there are two buttons: "OK" and "Cancel".

3. Click **OK** to save the settings.

4.4.2 Restoring the Default Settings

Steps:

1. In the device list area, check ☒ checkbox to select the device(s).
2. Click **Restore** to activate the following dialog box.



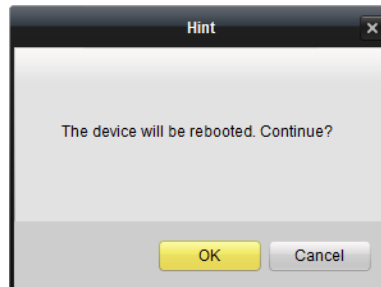
A dialog box titled "Hint". It contains the text "Restoring default parameters will reboot the device(s). Continue?". At the bottom, there are two buttons: "OK" and "Cancel".

3. Click **OK** to restore the default settings of the selected device(s).

4.4.3 Rebooting the Device

Steps:

1. In the device list area, check ☒ checkbox to select the device(s).
2. Click **Reboot** to activate the following dialog box.



3. Click **OK** to reboot the device(s).

0100001031203